



April-June
2007



MEMBER NEWSLETTER

Inside this issue:

Things to do	2
Auto-Entry Gate	2
Parking Policy	3
Mowing Begins!	3
Safety Tips	4
May Calendar	5
June Calendar	6

Special points of interest:

- Swimming Pool Opens May 1st!
- Piper's Galley, our pool-side grill will open this summer!
- See our Calendar of Events on page 5 & 6.

Hi Everyone!

Aaaaaaah, Spring is finally in the Air! What a great time to be outdoors. I find myself getting ready for the warm weather with real enthusiasm. I hope you are too!

We've got a great summer planned for our resort & marina. Not only have we been busy making physical changes to the property, but we are also welcoming a new restaurant at the marina, Papa Joe's Country Café, as well as the opening of the RV Resort pool-side grill this summer.

We've added non-motorized boats, Golf Carts as well as bicycle rentals.

Exercise Classes

If you are interested in taking a low impact exercise class this summer at the RV Resort, please let us know at the front desk. We are working with physical trainers in the area to set something up, but must have a firm commitment in order to do so.

Those are just more reasons why staying at Caney Creek RV Resort & Marina is better than the rest!

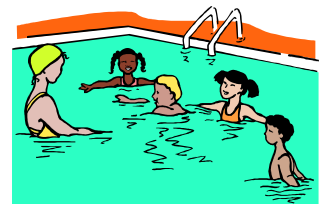


Please take a few moments to familiarize yourself with the articles within. Some are purely informational, but others are very important to your overall enjoy-

Summer Activities

Starting in May take a look at the Bath House Bulletin Board & on-line to see what activities we will be hosting for that month. Check with the Welcome center for any day-of changes due to weather, etc.

ment of the resort this summer. If you have any questions about anything in this newsletter, feel free to call me anytime. My direct line is 865-882-4042 x2001. Thanks for being our Guest!



PS: Don't forget... The swimming pool opens for the Season May 1st! Have a safe and cool summer! - Rob

Pool-Side Grill

The RV Resort Pool-Side Grill "Piper's Galley" will be opening this Summer on weekends and holidays. Be sure to stop by to get a quick bite or something cool to drink as you sit in the shade under the pavilion by the pool!

Warm weather brings new things to do...

Are you ready for some fun? It's about time to dust off those shorts and swim suits and get ready for summer. Although many of you haven't been around much this winter we have been very busy! Here's a few highlights we wanted to share with you now.

We have built a ¾ mile long concrete Recreation Trail.

This trail is PERFECT for walking, bicycle riding, even cruising on your roller-blades around the resort. We are putting the finishing touches on the trail this month and will be ready for the season. Note: No Golf Carts allowed after dark on the trail.

The Mile-long Hiking Trail:

This trail is for NON-

MOTORIZED foot-traffic ONLY! No motor-bikes, ATV's, Golf Carts, Etc



(except resort maintenance vehicles) of any kind may be used. These trails offer the best views of the resort and surrounding area so be sure to bring your hiking boots

and a buddy. Safety First - Never hike alone!

Regulation Size Horse-Shoe Pit and Shuffleboard

Court: Here are two more new items for your recreational needs. Equipment may be checked out at the resort front desk. As always, there is no fee to check out equipment; unless you don't return it or it is damaged. This includes Volleyballs, Badminton, Horse Shoes, Etc.

Pool-Side Satellite Radio

will be added this year. Sit back and relax while the tunes play on!

Join the Walking Club or attend Exercise & Fitness Classes this summer. See Debbie for more details.

Be sure to get your resort entry device prior to May 25, 2007 (Memorial Day weekend) when the Gates will be operational.

Automatic Entry Gate... Pick up your entry device before May 25th or you will be locked out!

Coming Soon the new Automatic resort entry gate. You've asked us for it, and we're happy to deliver it. This gate will be installed soon and access to the RV resort will be limited to resort guests and registered visitors.

Here's how it works. **All guests MUST have a Gate Proximity Card or Remote** to access the resort. No more padlocks, No numbers to remember! Simply swipe your card over the reader or click the remote and Whalla! You're in!

Our long-term guests 6mos to 1 yr will have the option for a remote control (max of 2). Our daily and month-to-

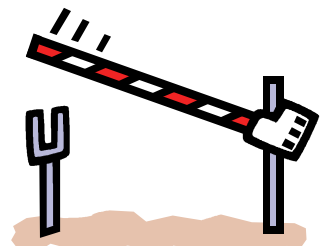
month guests will receive proximity cards for entrance to the resort. (1 max). **Deposits are required** as follows... \$10 for a Card and \$50 for a Remote Control.

We have worked with our friends at the 911 office to ensure our device is compatible with their emergency vehicles for easy access during the event of an emergency in the resort.

Please note: All guests visiting you **MUST** register at the Front Desk prior to arrival. They will not be issued a gate access device. You are responsible to meet them at the gate and let them in if after-

hours. This also includes local food delivery drivers.

Once the gates have been activated ALL Members **MUST** have either a Card or Remote or you will not be able to access the resort. Please pick up your entry device prior to May 25, 2007! For security reasons we can not mail them to you. They must be picked up in person at the RV Front Desk.



Resort Parking & Guest Policies to be strictly enforced!

Parking: We have contracted with local towing companies to help remove mis-parked and unauthorized RV's, vehicles, boats and trailers from the resort. To avoid being towed at your expense please follow these simple, but very important guidelines:

*Get a current vehicle and/or boat parking pass (max of 2). No Pass or Expired Pass means you will be towed at your expense!

*No Parking in the Road. Please be sure your entire RV & vehicle are on your site. If you stick out onto the road you must park in the gravel lot.

*Park in your designated site & slip only. DO NOT PARK in any other site or slip, but your own. This was the biggest reason we towed last year. Why? You have no idea what site/slip has been rented for the night and just because it is empty does not mean its open. Please park on your site/slip or in the Gravel Parking lot or you will be towed at your expense.

*No Boat or utility trailers are allowed past the Gravel Lot. We charge a daily fee for every boat entering the resort in or out of the water. Please see the office for current rates. All registered boats & trailers must have a parking decal affixed.

*All Visitors MUST park in designated parking spaces near the Bath House or Pool. Once those are filled they must park in the Gravel Lot across from the check in building or they will be towed.

***DO NOT PARK ON THE ROAD, GRASS, GOLF CART PARKING, OR ANY OTHER SITE BUT YOUR OWN!**

Guests: All Guests MUST be registered at the front desk prior to entering the resort to get a daily parking pass. Guests are required to park in the auxiliary parking spaces or gravel lot. Fees for guests are assigned as

follows:

\$6 for Adults / \$3 for Children.

These fees apply for every Guest over 4 per site, **not to exceed 8 people total.**

Please Note:

6-month members are allowed 2 additional Guests at no extra charge and **Annual members** are allowed 4 additional Guests at no extra charge. However, ALL guests must sign in prior to entry to receive a daily parking pass.—

Thank You for your help and cooperation.

Mowing Season Begins!

Dear Resort Members & Guests,

It's that time of year to begin caring for the lawns around the resort. Our Mowing Team has begun the first of a long season of mowing days. I wanted to take the opportunity to outline the mowing procedures and resort policies to ensure your area gets mowed and no damage occurs to your site or belongings.

Mowing day is scheduled during the week each **Monday thru Friday** (weather and holiday permitting) so there needs to be some preparations on your part in order to ensure your site is done as quickly and easily as possible. Please:

*Be sure all slides are in when the mowing crew starts

working. If they can't reach under your rig **you** are responsible for mowing that grass the same day as the mowing team. We are very strict about this rule so please plan ahead. Note: If the mowers can easily access under your pull-outs this rule need not apply.

*For safety & sanitary reasons, **you** are responsible for mowing the grass under & around your sewer connections. We can not move sewer hoses so please do not ask the mowers to move them for you. However, if you move them ahead of time we will happily mow the area for you.

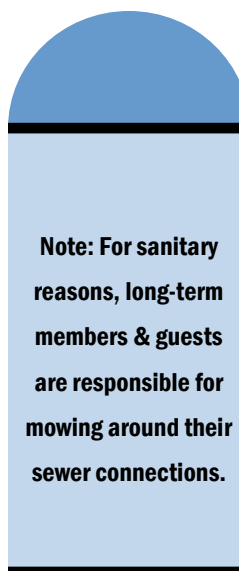
*Remove all personal items from the grass around your site (satellites, toys, chairs, rugs, etc). We are not respon-

sible for damage to items left in the grass or covered by grass clippings.

*Close your Windows! It gets dusty out there during the mowing process.

The mowing team is expected to maintain proper standards of grooming, appearance & code of conduct at all times within the resort. If for any reason you have a concern about them, please bring it to my attention immediately. Lastly, the mowing crew has been instructed not to accept any gratuities or gifts (food or otherwise) from members & guests so please do not offer it. It is our pleasure and our service to you as our guests.

Thank you for your help as we enter our mowing season. Have a great summer! - Rob



Note: For sanitary reasons, long-term members & guests are responsible for mowing around their sewer connections.

Safety Tips...

- When you leave the resort remove your window tag. This prevents others from knowing how to find where you are staying. Just be sure to put it back when you return.
- Secure Loose Items around your site. With high winds many chairs, table cloths and cups, plates, etc. have been found all over the resort. Also— be sure to pull in those awnings. A few minutes could save you hundreds in repair costs.
- No Swimming around Boat Docks. Last summer two children drown on lower Watts Bar Lake. Please carefully watch your children around water.
- Lake Swimming: Our resort policy is Swim At Your Own Risk. There are snakes that hide in the shoreline rocks so Please Do Not Throw or Walk on the rocks!
- Resort Speed Limit is 5 mph. Please watch for children. Stop for anyone crossing the road at trail entrances.

Recreation Trail Courtesy

We designed the concrete Recreation Trail to allow a multi-use path that includes walkers, runners, bicycles, & golf carts. With this in mind please be courteous to your fellow trail users.

- If you intend to pass someone be sure to call out your intentions so you don't startle them as you go by. For instance, "I'm passing on your left".
- Pedestrians ALWAYS have the right of way.
- Bicycles are not permitted to be used anywhere in the resort after dark.
- Golf Carts, motorized scooters, bikes, etc. are prohibited on the trail after dark.
- Please pull off the path if need be to allow another person to pass.
- Maintain slow speed 5 mph max on trail.
- STOP and look both ways before crossing a roadway from one trail to the other.

By following a few simple steps you can help in keeping the resort trail safe for all guests.—Thank you!

We're on the web..
CaneyCreekRVresort.com

Have a Maintenance Request? Email-
maintenance@caneycreekRVresort.com

Papa Joe's Country Café NOW OPEN at the Marina!



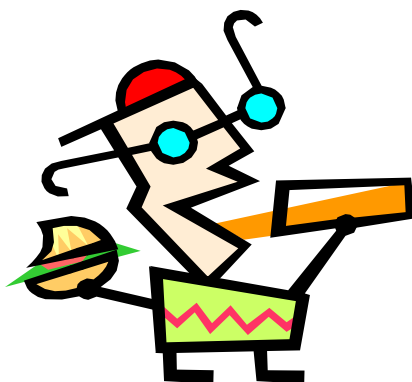
Award Winning Sweet Tea!

Welcome to Papa Joe's Country Café' where Great Food meets Great Service. We're so proud of the job Papa Joe has done to prepare for the season we can't wait to see what they cook up next!

Papa has scheduled Live Entertainment for almost every Friday and so far the feedback has been stellar!

Be sure to come by Friday thru Sunday starting at Noon to enjoy a Great Meal in a Great Setting on the water!

Call Papa Joe at
(865) 882-8282





Detailed Activity Listing



ALL ACTIVITIES ARE FOR PAYING RESORT GUESTS ONLY. CHILDREN UNDER 16 YEARS OF AGE REQUIRE ADULT SUPERVISION.

Here's a list of many of the Activities we have planned this summer. Be sure to check the Monthly Calendars to see when they are scheduled.

Quick Step : Walking program. Walk the recreation trail with fellow guests at your own pace. Self-led, self-paced, non-instructed. Meet at the Pavilion.

Movie Night: All movies are either rated G or PG and are intended for Family viewing. Viewer discretion is advised. All Children under 16 must be supervised.

Friday Night Music: Located at Marina. Time and prices subject to change call 882-8282 for more information. For limited time a free Shuttle service will be provided to the marina from the Resort every hour on the hour 7pm - 10pm. Meet at Fishing Pier.

Pancake Breakfast: For small fee. Pancake and sausages at Pavilion

RC Boats: Remote Control Boats on Pool Deck \$2 per 10 mins. Only RC boats belonging to resort allowed in Pool 9-10am. No boats allowed in pool after 10am. Person operating boat is responsible for damage. Children 6 and up can use main pool boats with assistance of an adult. Children under 6 can use kiddie pool boat with parental help. In order to accommodate as many guests as possible each guest will be allowed only one turn. Adults welcome!

Saturday Night Music: When Available. Located at pavilion. Please bring lawn chairs as seating is limited.

Coffee: Available at Welcome Center. Doughnuts offered on specific occasions check calendar.

Name That Tune: Challenge your family and test your knowledge of songs. Game show includes audience participation. Good family fun. Located in Pavilion.

Bingo: This activity has two times. The first hour prizes are age appropriate for 16 and under. Parental guidance is required. The second hour is for adults only.

Craft Hour: Crafts are open to all ages but are geared for ages 16 and under. Some Crafts may have a small fee associated with them.

Ice Cream Social: Come enjoy your favorite ice cream and add your favorite toppings while supplies last.

Coloring Contest: Pick your picture to color and let the RV Resort guests judge it. Pictures may be separated by age groups based on participation. Finished pictures will hang in the Welcome Center for voting. Tell our reservation agent your choice and we will keep a tally. All winners will be posted at Welcome Center 5:00pm Sunday. Small prizes will awarded.

Best Decorated Golf Cart: This fourth of July affair will take place at the Gravel lot. All entries must be present by 2:00pm for voting. After voting is complete the winner will be announced. All golf carts are welcome to participate in the parade.

Fourth of July Parade: All parties interested in participating in the parade must be at the gravel lot by 3:30pm. The parade will go from gravel lot towards bath house, turn right and go towards pavilion.

Watermelon Spitting Contest: All Parties interested meet at pavilion. One at a time people will have chance to show off their spitting ability.

Line Dancing: Instructors from Cotton-Eyed Joe's will be on hand for some dancing.

Storyteller: Professional storyteller at the Pavilion for July 4th weekend join us an hour earlier for s'mores for small fee.

Recreation trail: ALL motorized and non-motorized transportation MUST YIELD to pedestrians. As a courtesy please call out left or right to indicate the side you are passing on. Watch your speed! Parents please explain these policies to your children. Children under the age of 16 must wear helmets while riding bikes. Bike rentals and Golf cart rentals available at Welcome Center for additional price.

Also Available at the Welcome Center for rent are Books, Balls, Games, Horseshoes, Shuffle Board, Pedal Boat and Canoes. Pontoon and Fishing boat rentals are available at the Marina. Please visit the Front Desk & Welcome Center for additional information. Calendars will be posted on-line as well as the bath house.



MAY 2007



*Denotes activities have small fee.

ALL EVENTS AND PRICING SUBJECT TO CHANGE . CHECK THE ACTIVITY BOARD AT BATHHOUSE FOR UPDATES OR INQUIRE AT OFFICE 865-882-4042 EXT.1000. ALL EVENTS MEET AT PAVILION UNLESS NOTED ON CALENDAR.

Sun	Mon	Tue	Wed	Thu	Fri	Sat
20	21	22	23	24	25	26
					7pm Movie: Cars 8pm –11pm Music at Marina	*7:30am-9am Pancake Breakfast *9am-10am RC Boats at Pool 1pm-2pm Balloon Artist 6:30pm Dunn Had It's-Bluegrass Band
27	28	29	30	31	Office Hours Memorial Day: 8am-8pm Regular Office Hours: 10am-6pm Pool Hours: 10am-10pm Bathhouse/Laundry: 24hrs Piper's Galley: Weekends Only July– Sept.	
8am-10am Coffee/ doughnuts at Welcome Center 1pm-2pm Sidewalk Chalk 6-8pm Karaoke	9 am Quick Step	7 pm Quick Step	9 am Quick Step	7 pm Quick Step		

ALL ACTIVITIES ARE FOR PAYING RESORT GUESTS ONLY. CHILDREN UNDER 16 YEARS OF AGE REQUIRE ADULT SUPERVISION.

Please Visit the Front Desk & Welcome Center for Additional Information.